



CLUBSPORT
RACING WHEEL F1®

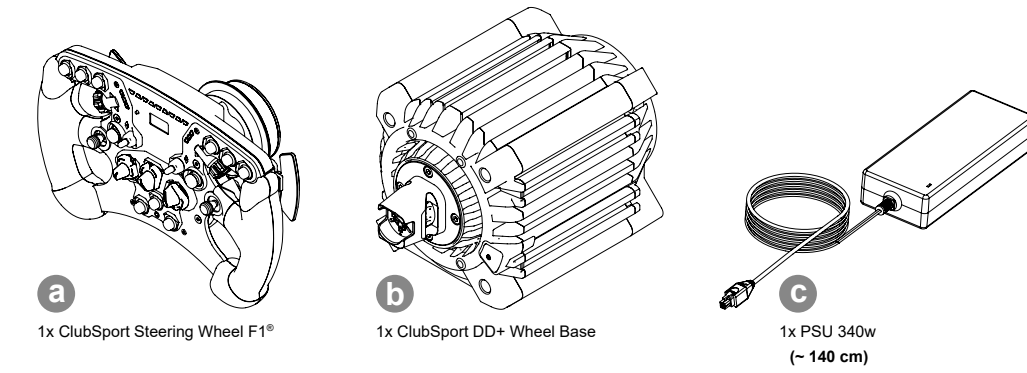


EN Quick Guide
FR Guide De Démarrage Rapide
DE Kurzanleitung
ES Guía Rápida
IT Guida Rapida
PT Guia Rápido

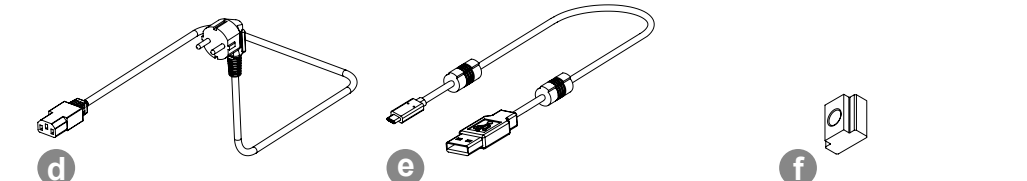


A **EN PACKAGE CONTENTS**
FR CONTENU DE L'EMBALLAGE

DE Lieferumfang; ES Contenido del embalaje;
IT Contenuto della confezione; PT Conteúdo da embalagem



a 1x ClubSport Steering Wheel F1®
b 1x ClubSport DD+ Wheel Base
c 1x PSU 340w (~140 cm)



d EN 1x Power Cord (Regional)
FR 1x Cordon d'alimentation (Régionale)
DE 1x Netzkabel (Regional)
ES 1x Cable de alimentación (Regional)
IT 1x Cavo di alimentazione (Regionale)
PT 1x Cabo de Alimentação (Regional) (~160 cm)

e EN 1x USB Type-A to Type-C Cable
FR 1x Câble USB de type A vers type C
DE 1x USB-Kabel Typ A zu Typ C
ES 1x Cable USB tipo A a tipo C
IT 1x Cavo USB da tipo A a tipo C
PT 1x Cabo USB tipo A para tipo C (~290 cm)

f EN 4x T-Nut
FR 4x Écrous en T
DE 4x Nutenstein
ES 4x Tuercas en T
IT 4x Dadi a T
PT 4x Porca T (M6x8 mm)

B **EN GETTING STARTED**
FR POUR COMMENCER

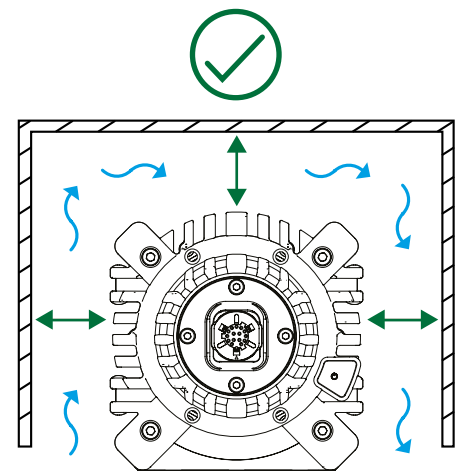
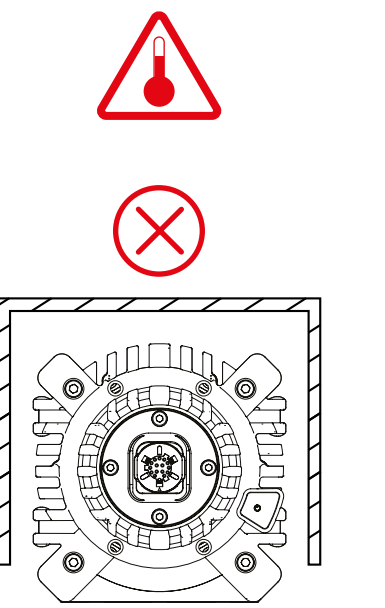
DE Erste Schritte; ES Cómo comenzar; IT Come iniziare; PT Começando



Fanatec.com/QR/CS-RW-F1
Fanatec.com/app
Fanatec.com/driver

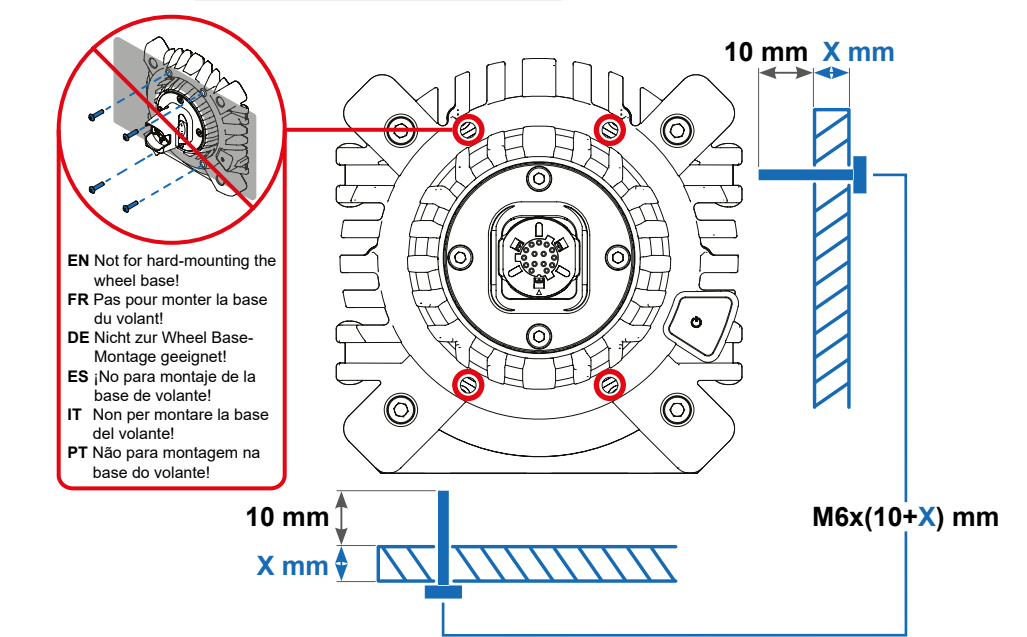
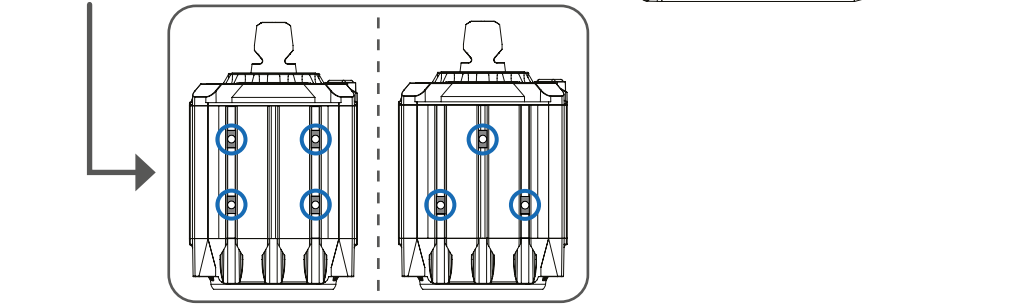
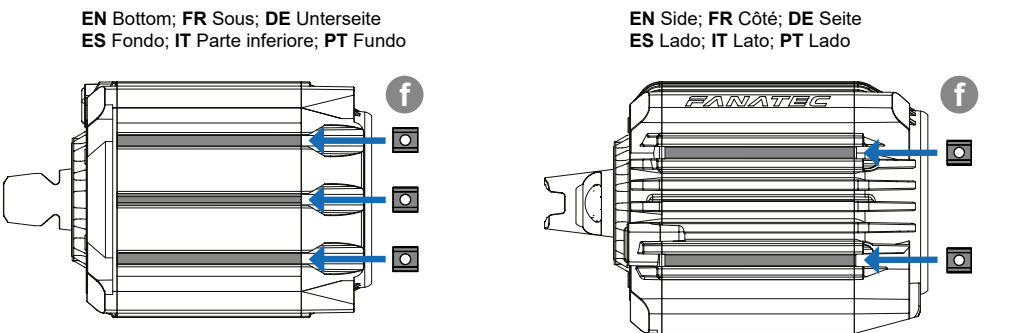
C **EN PASSIVE COOLING**
FR REFRROIDISSEMENT PASSIF

DE Passive Kühlung; ES Refrigeración pasiva; IT Raffreddamento passivo; PT Refrigeração passiva



D **EN HARD-MOUNT**
FR INSTALLATION FIXE

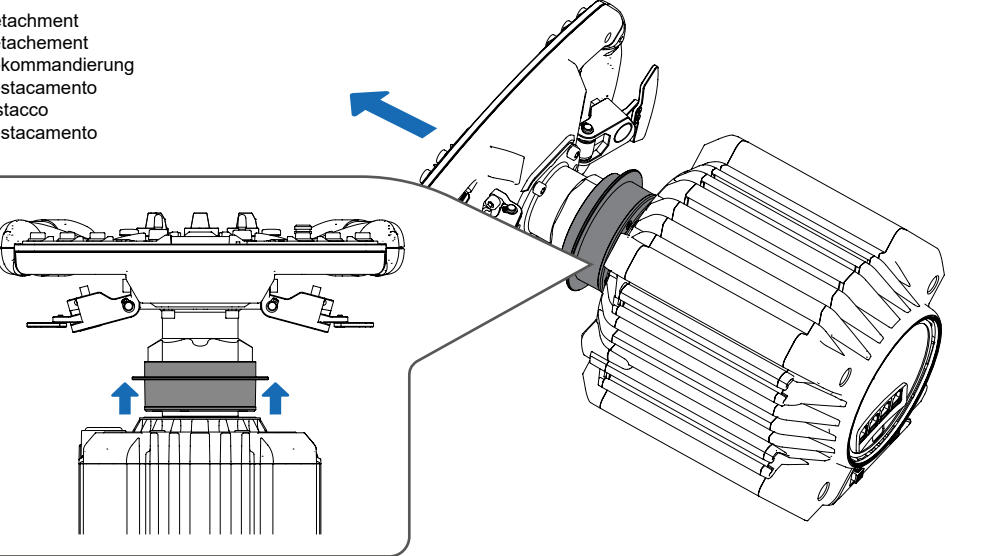
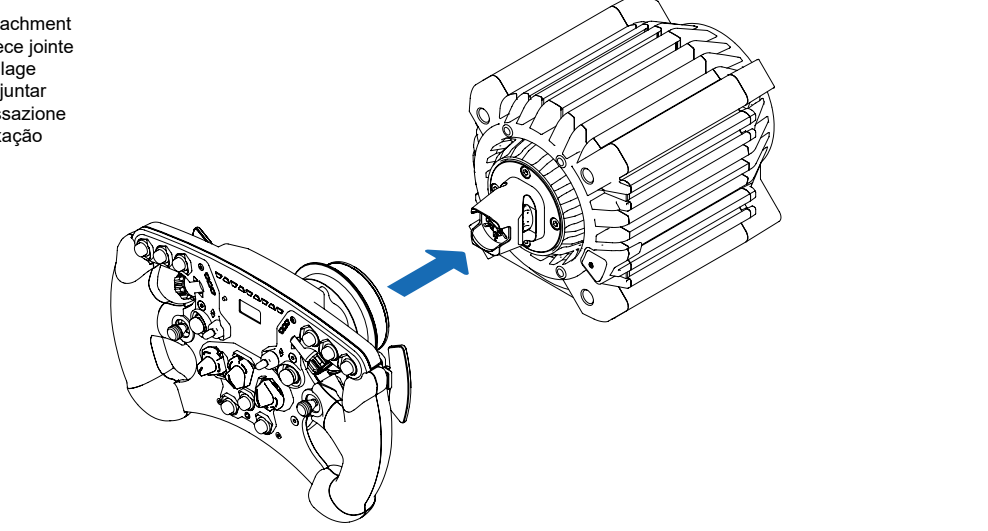
DE Montage; ES Montaje; IT Montaggio; PT Montagem



EN Not for hard-mounting the wheel base!
FR Pas pour monter la base du volant!
DE Nicht zur Wheel Base-Montage geeignet!
ES No para montaje de la base de volante!
IT Non per montare la base del volante!
PT Não para montagem na base do volante!

E **EN STEERING WHEEL ATTACHMENT**
FR MONTAGE DU VOLANT

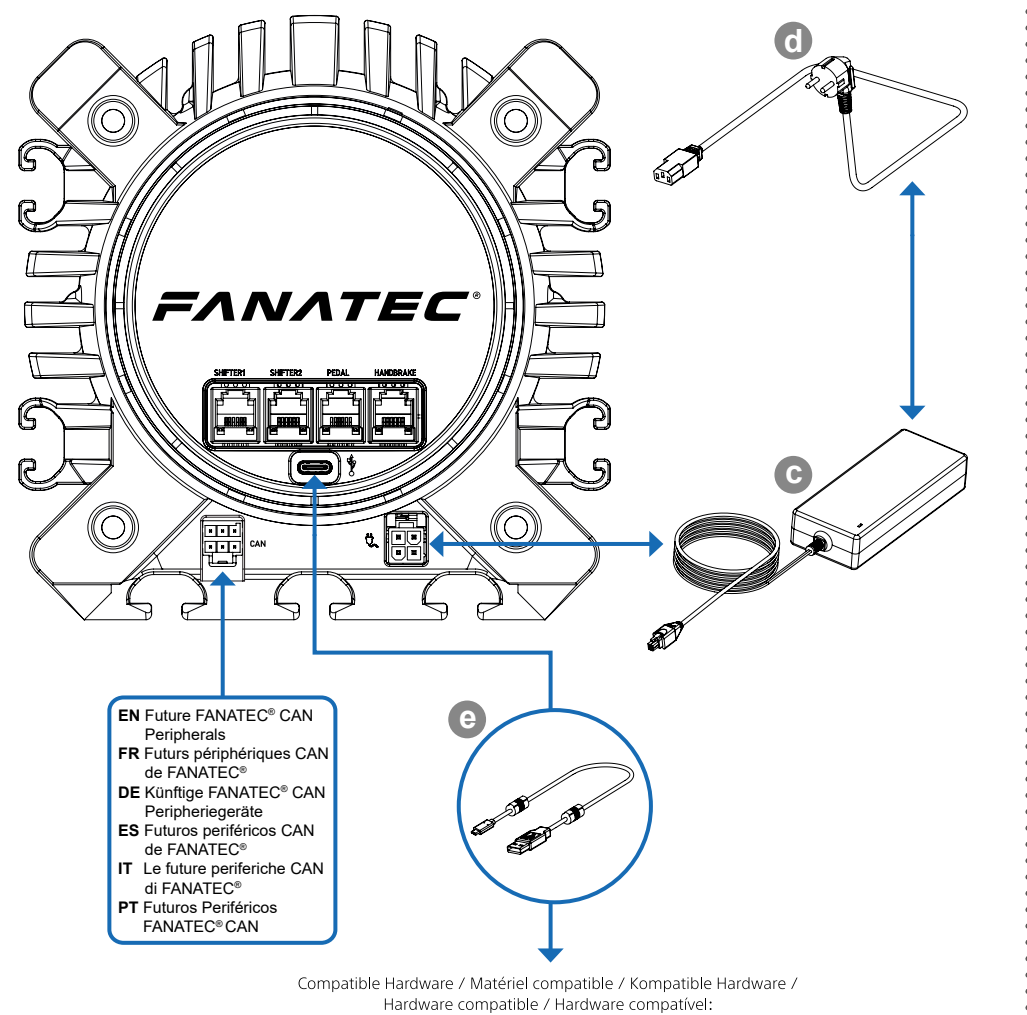
DE Lenkradbefestigung; ES Montaje del volante; IT Attacco del volante; PT Fixação do volante



EN Illustrations may differ from the actual product; FR Les illustrations peuvent différer du produit réel; DE Die Abbildungen können von dem tatsächlichen Produkt abweichen; ES Las ilustraciones pueden diferir del producto real; IT Le illustrazioni possono differire dal prodotto reale; PT As ilustrações podem diferir do produto real.

F **EN CONNECTIONS**
FR RACCORDEMENTS

DE Anschlüsse; ES Conexiones; IT Connessioni; PT Ligações



EN Future FANATEC® CAN Peripherals
FR Futurs périphériques CAN de FANATEC®
DE Künftige FANATEC® CAN Peripheriegeräte
ES Futuros periféricos CAN de FANATEC®
IT Le future periferiche CAN di FANATEC®
PT Futuros Periféricos FANATEC® CAN

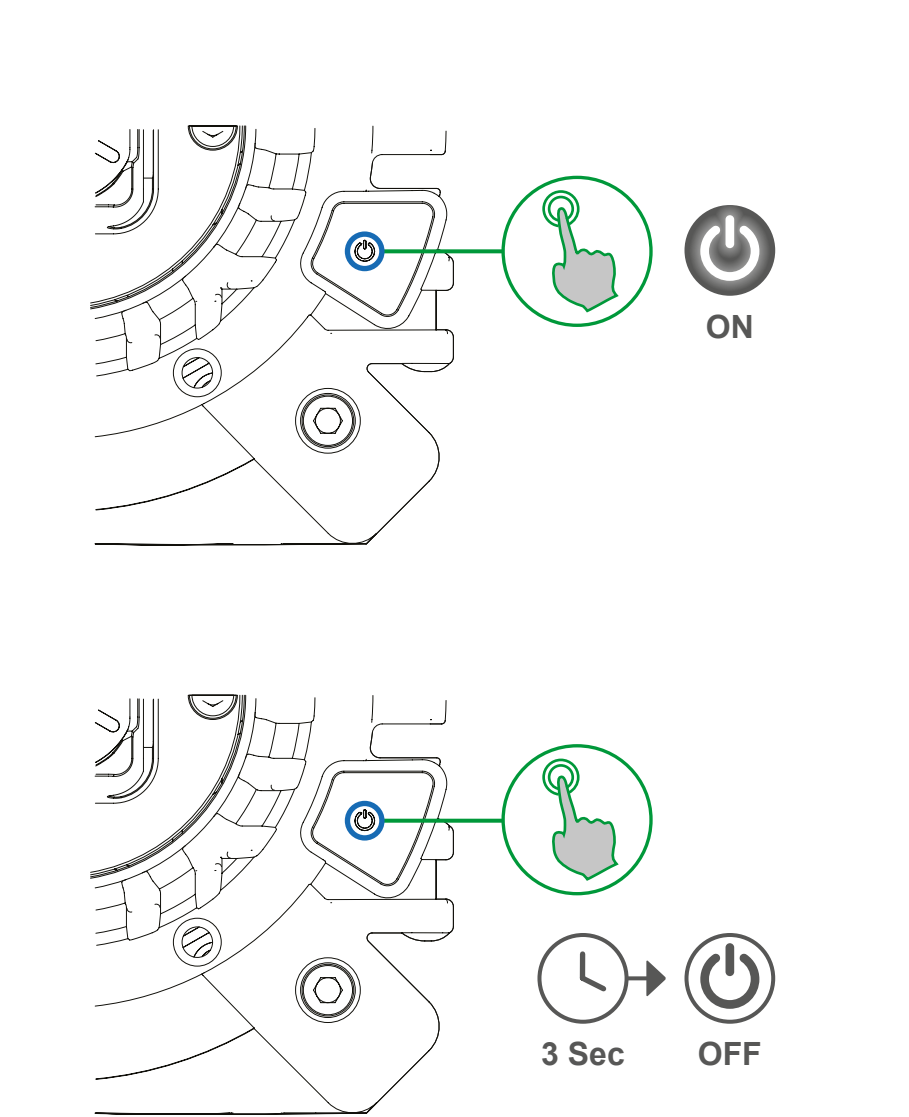
Compatible Hardware / Matériel compatible / Kompatible Hardware / Hardware compatible / Hardware compatível:



EN PC compatibility not tested nor endorsed by Sony Interactive Entertainment Inc.
FR La compatibilité avec les PC n'a pas été testée ni approuvée par Sony Interactive Entertainment Inc.
DE Die PC-Kompatibilität wird von Sony Interactive Entertainment Inc. weder getestet noch unterstützt.
ES La compatibilidad con el PC no ha sido probada ni apoyada por Sony Interactive Entertainment Inc.
IT La compatibilità con il PC non è stata testata né supportata da Sony Interactive Entertainment Inc.
PT Compatibilidade com PC não testada nem endossada pela Sony Interactive Entertainment Inc.

G **EN ON & OFF**
FR MARCHÉ ET ARRÊT

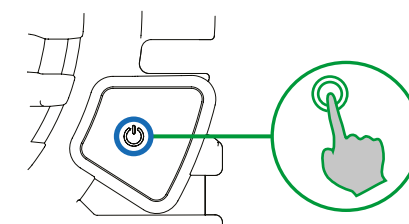
DE An und Aus; ES Encendido y apagado; IT Accensione e spegnimento; PT Ligado e desligado



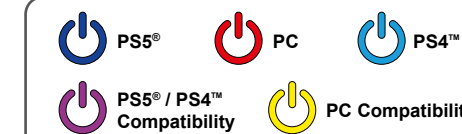
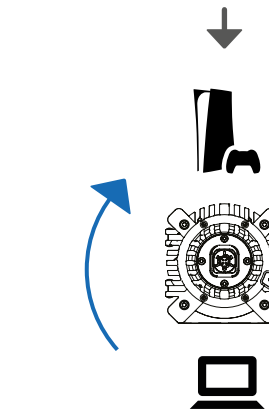
3 Sec OFF

H EN MODES FR MODES

DE Modi; ES Modos; IT Modalità; PT Modos

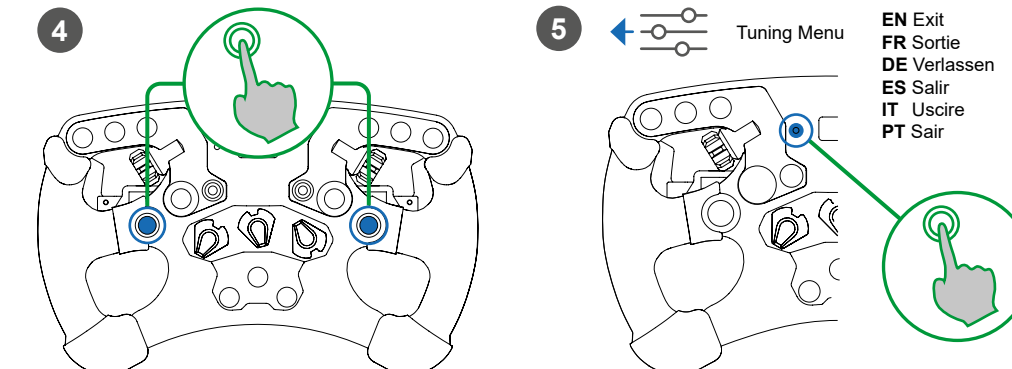
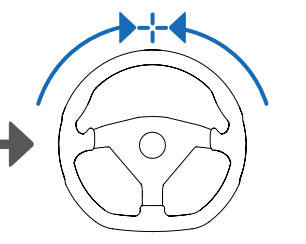
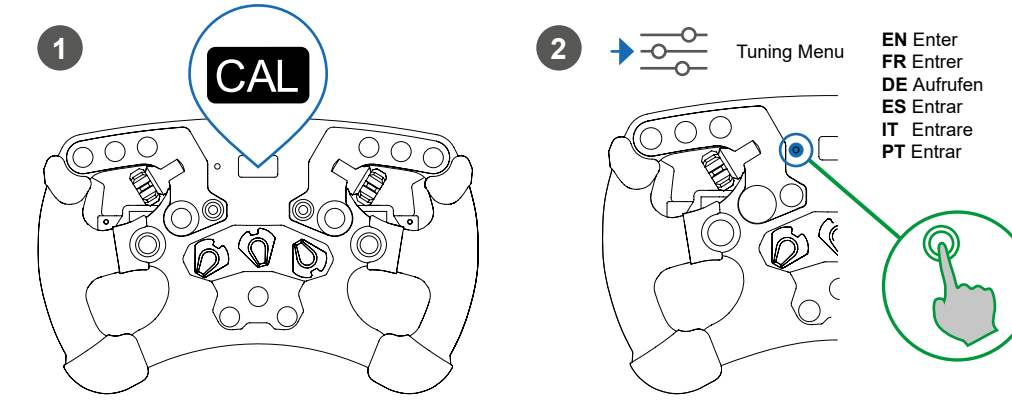


EN Repeat
FR Répéter
DE Wiederholen
ES Repetir
IT Ripetere
PT Repetir

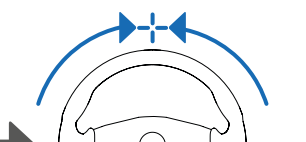


I EN CENTER CALIBRATION FR CALIBRAGE DU CENTRE

DE Kalibrierung der Mittelstellung; ES Centrado del volante;
IT Calibrazione del centro del volante; PT Calibração do centro



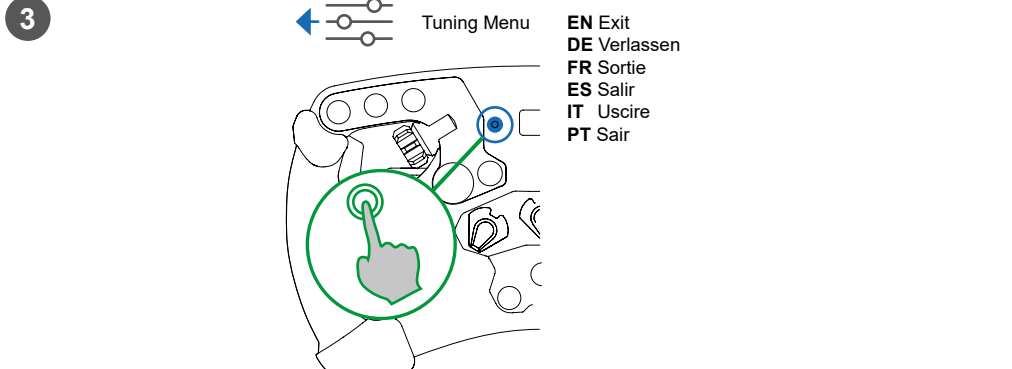
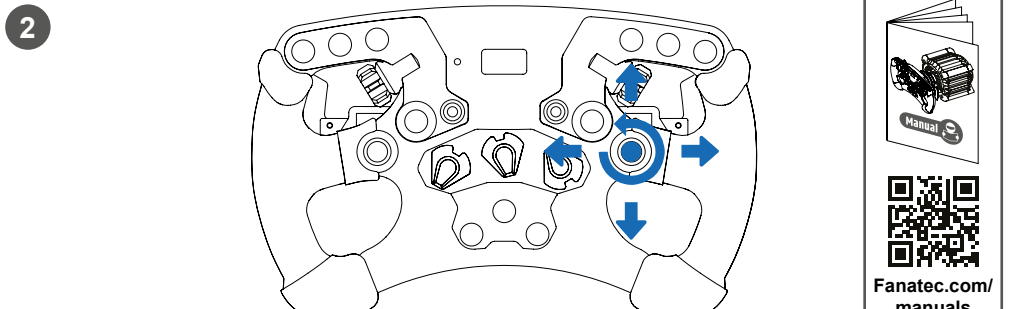
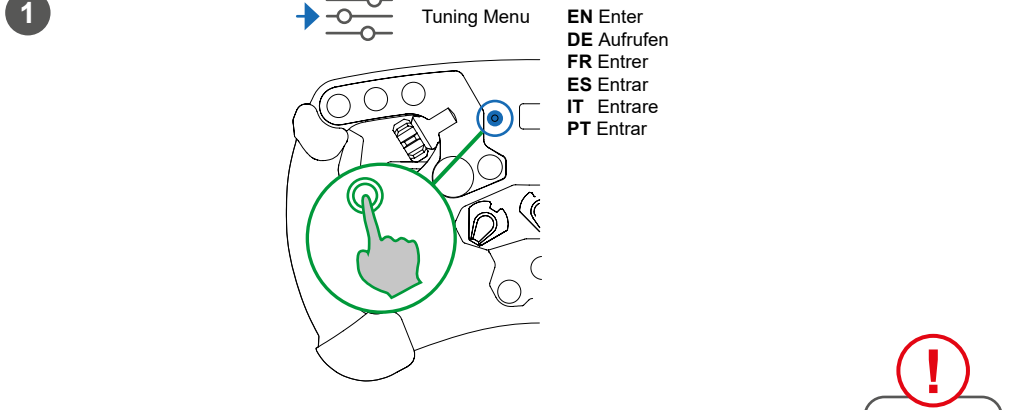
1
EN Enter
FR Entrer
DE Aufrufen
ES Entrar
IT Entrare
PT Entrar



5
EN Exit
FR Sortie
DE Verlassen
FR Sortie
ES Salir
IT Uscire
PT Sair

J EN TUNING OPTIONS FR OPTIONS DE RÉGLAGE

DE Einstellungsoptionen; ES Opciones de ajuste; IT Opzioni di sintonizzazione; PT Opções de afinação



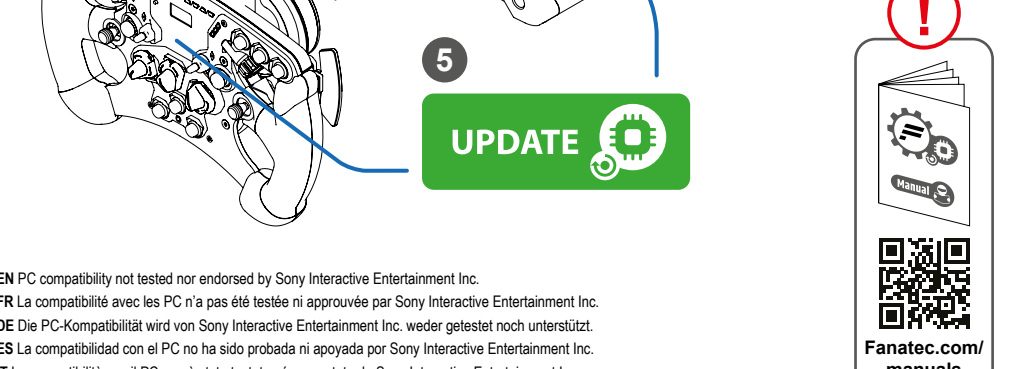
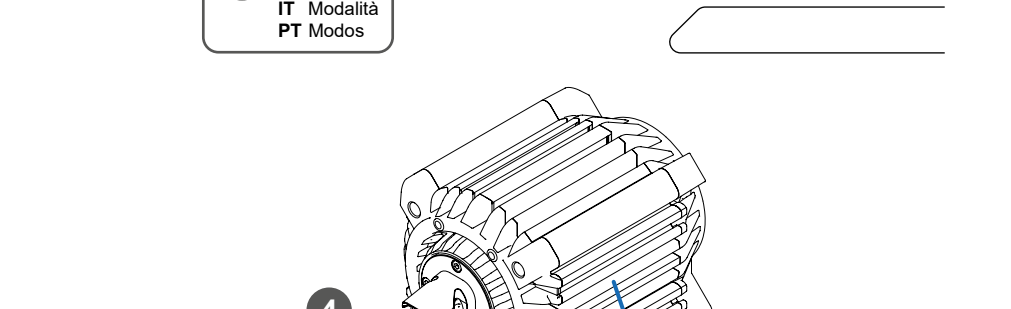
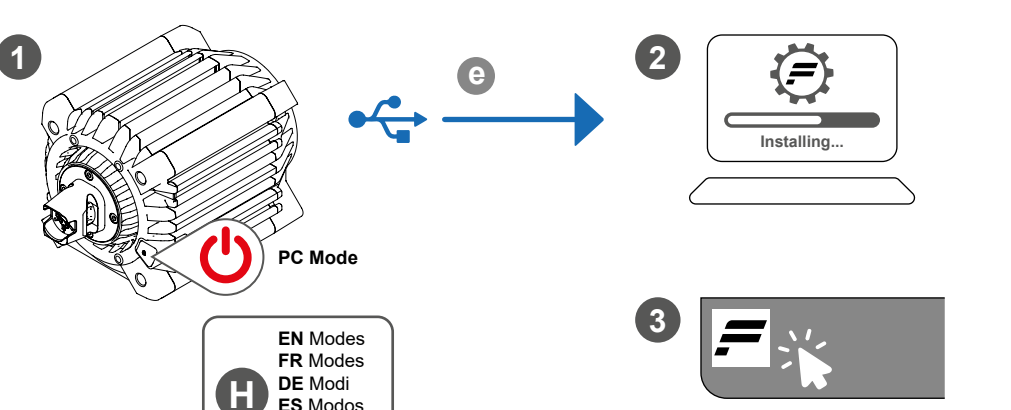
1
EN Enter
FR Entrer
DE Aufrufen
ES Entrar
IT Entrare
PT Entrar

2
EN Exit
FR Sortie
DE Verlassen
FR Sortie
ES Salir
IT Uscire
PT Sair

3
EN Exit
FR Sortie
DE Verlassen
FR Sortie
ES Salir
IT Uscire
PT Sair

K EN FIRMWARE UPDATE FR MISE À JOUR DU FIRMWARE

DE Aktualisierung der Firmware; ES Actualización del firmware;
IT Aggiornamento del firmware; PT Atualização de Firmware



1
EN Enter
FR Entrer
DE Aufrufen
ES Entrar
IT Entrare
PT Entrar

2
EN Modes
FR Modes
DE Modi
ES Modos
IT Modalità
PT Modos

3
EN Exit
FR Sortie
DE Verlassen
FR Sortie
ES Salir
IT Uscire
PT Sair

L EN SUPPORT FR SUPPORT TECHNIQUE

DE Unterstützung; ES Soporte técnico; IT Supporto tecnico; PT Suporte técnico



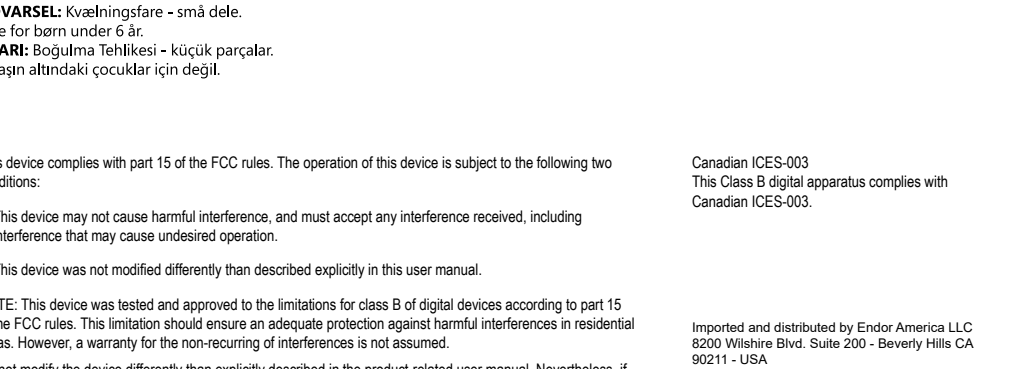
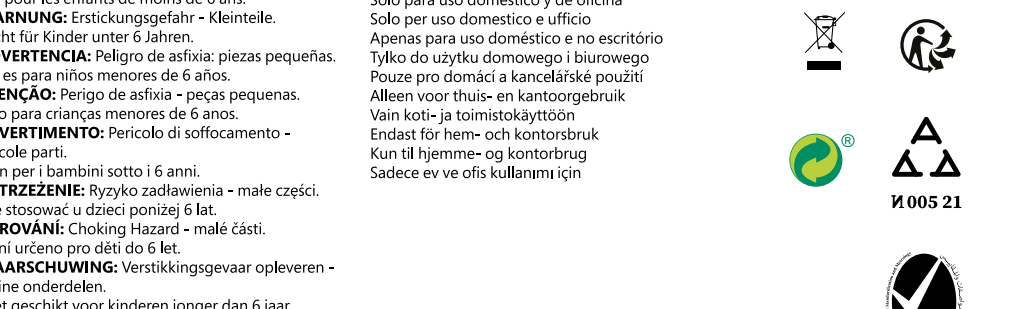
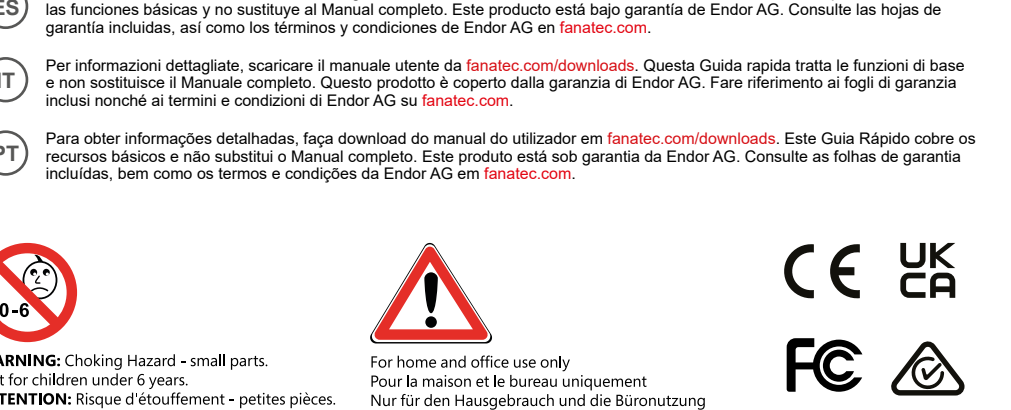
1
EN Enter
FR Entrer
DE Aufrufen
ES Entrar
IT Entrare
PT Entrar

2
EN Exit
FR Sortie
DE Verlassen
FR Sortie
ES Salir
IT Uscire
PT Sair

3
EN Exit
FR Sortie
DE Verlassen
FR Sortie
ES Salir
IT Uscire
PT Sair

M EN SUPPORT FR SUPPORT TECHNIQUE

DE Unterstützung; ES Soporte técnico; IT Supporto tecnico; PT Suporte técnico



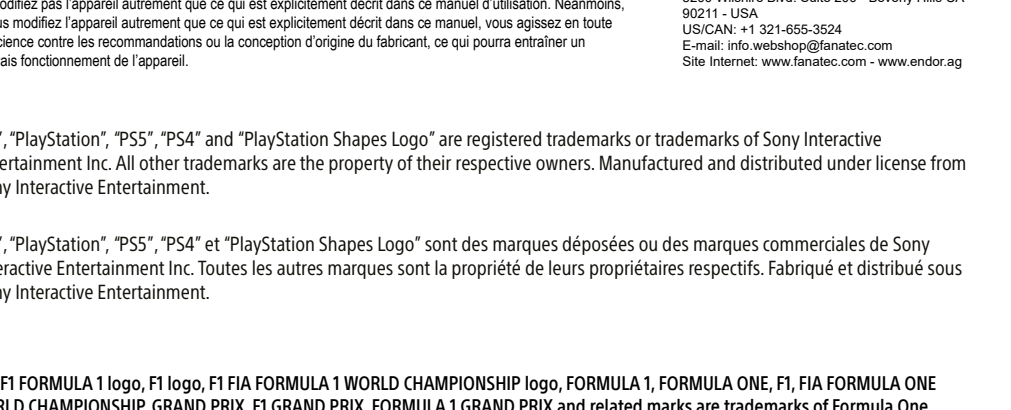
1
EN Enter
FR Entrer
DE Aufrufen
ES Entrar
IT Entrare
PT Entrar

2
EN Exit
FR Sortie
DE Verlassen
FR Sortie
ES Salir
IT Uscire
PT Sair

3
EN Exit
FR Sortie
DE Verlassen
FR Sortie
ES Salir
IT Uscire
PT Sair

N EN SUPPORT FR SUPPORT TECHNIQUE

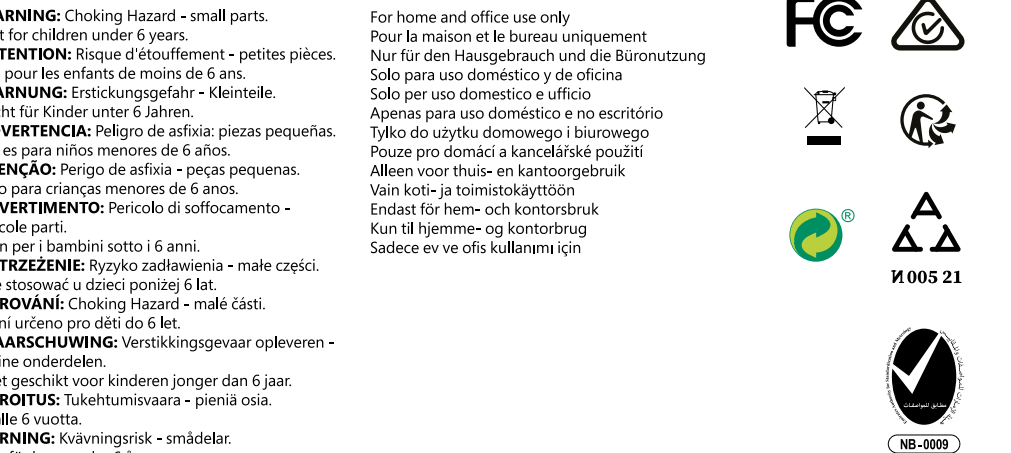
DE Unterstützung; ES Soporte técnico; IT Supporto tecnico; PT Suporte técnico



1
EN Enter
FR Entrer
DE Aufrufen
ES Entrar
IT Entrare
PT Entrar

2
EN Exit
FR Sortie
DE Verlassen
FR Sortie
ES Salir
IT Uscire
PT Sair

3
EN Exit
FR Sortie
DE Verlassen
FR Sortie
ES Salir
IT Uscire
PT Sair



Canadian ICES-003
This Class B digital apparatus complies with Canadian ICES-003.

Imported and distributed by Endor America LLC
8200 Wilshire Blvd. Suite 200 - Beverly Hills CA 90211 - USA
Telephone: +1 321-655-3524
Email: info.webshop@fanatec.com
Website: www.fanatec.com - www.endor.ag

Endor Australia Pty Ltd
3 Staley Street, California Gully, Vic, 3556 - Australia
Telephone: 661 453 979 40
Email: webshop@fanatec.com
Website: www.fanatec.com - www.endor.ag

Designed in Germany
Conçu en Allemagne
Entwickelt in Deutschland
Diseñado en Alemania
Projetado en Alemanha
Projektato in Germania
Zaprojektowany w Niemczech
Navrženo v Německu
Ontworpen in Duitsland
Suunnitteltu Sakossa
Designad i Tyskland
Designad i Tyskland
Almánya'da tasarlan

Made in China
Fabriqué en Chine
Produziert in China
Hecho en China
Feito na China
Fatto in Cina
Wyprodukowano w Chinach
Vyrobeno v Číně
Gemaakt in China
Valmistettu Kiinassa
Tilvekkad i Kina
Lavet i Kina
Çin yapımı

Licensed for use exclusively with PS5™ consoles and PS4™ consoles.
Sous licence pour une utilisation exclusive avec les consoles PS5™ et les consoles PS4™.