

# FANATEC®

## ClubSport

Steering Wheel F1® Esports V2



EN Quick Guide  
FR Guide De Démarrage Rapide  
DE Kurzanleitung  
ES Guía Rápida  
IT Guida Rapida  
PT Guia Rápido



Official Provider of Formula 1® Esports Series

Rev. 06

**Video Manual**  
VIDEO MANUAL  
Fanatec.com/QR/CS-F1E-V2

**Driver Download**  
Driver Download  
Fanatec.com/driver

**Driver & Firmware Instruction Manual**  
Driver & Firmware Instruction Manual  
Fanatec.com/df-manual-V1

**Windows PC**  
Installing...

**PC Mode**  
PC Mode

**Update Firmware**  
Update Firmware

U Ü → EN Translations - Page 6; DE Übersetzungen - Seite 6; FR Traductions - Page 6; ES Traducciones - Página 6; IT Traduzioni - Pagina 6; PT Traduções - Página 6

### A PACKAGE CONTENT

**a** 1x ClubSport Steering Wheel F1® Esports V2

**b** 1x CSL Elite Magnetic Paddle Module

**c** 4x 4mm screws, 4x 4mm washers, 1x 4mm Allen key

### B QUICK RELEASE ATTACHMENT

1. Remove the top cap of the quick release attachment.

2. Insert the 4mm Allen key into the attachment.

3. Tighten the 4mm screws to 1 Nm. **Warning:** Do not over-tighten.

### C CENTRE CALIBRATION

1. Press the CAL button on the steering wheel.

2. Enter the Tuning Menu.

3. Rotate the steering wheel to the center position.

4. Press the CAL button again.

5. Exit the Tuning Menu.

### D SHIFTER CALIBRATION

\* Shift sequence diagram: R 1 3 5 7, N, 2 4 6.

1. Press the CAL button on the shifter.

2. Select gear 6 (E-r).

3. Select gear 7 (E-r).

4. Select gear 1 (E-1).

5. Perform calibration for all gears: E-3, E-5, E-7, E-2, E-4, E-6.

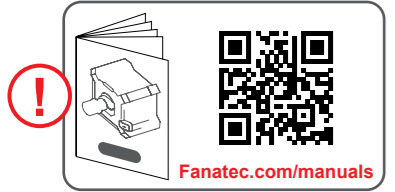
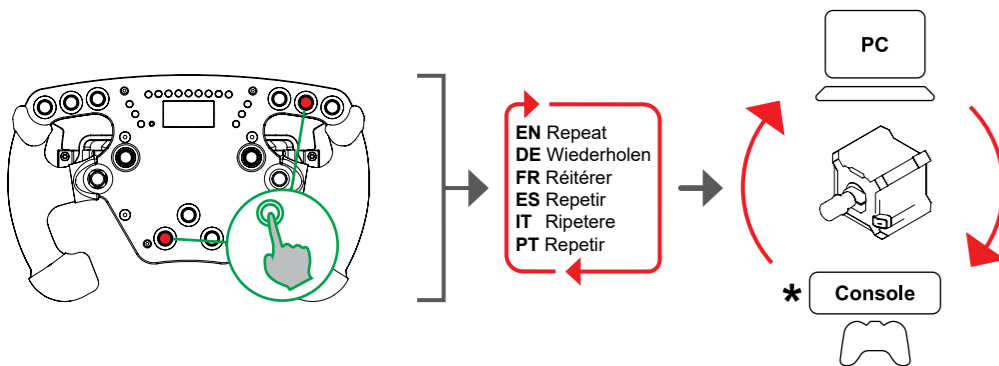
\* EN Sold separately; DE Separat erhältlich; FR Vendu séparément; ES Se vende por separado; IT Venduto separatamente; PT Vendido separadamente

1

2

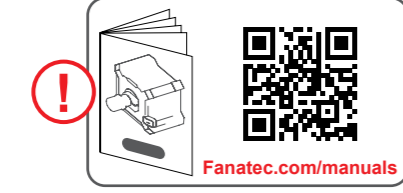
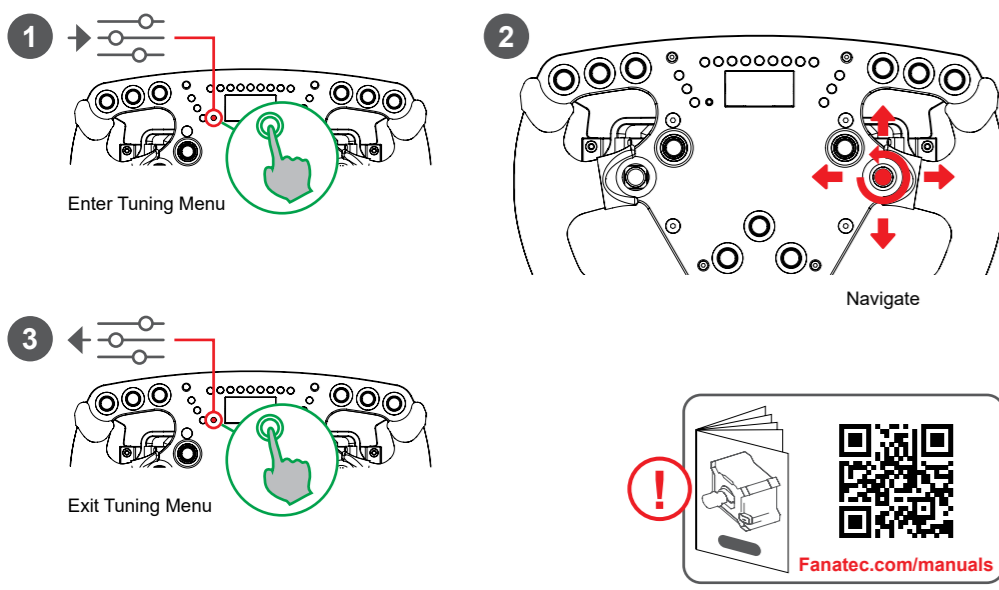
3

# E MODES



\* EN Wheel Base Dependent  
 DE Je nach Wheel Base  
 FR Dépendant de la base du volant  
 ES Dependiente de la Base del Volante  
 IT Dipendente dalla base del volante  
 PT Dependente da base do volante

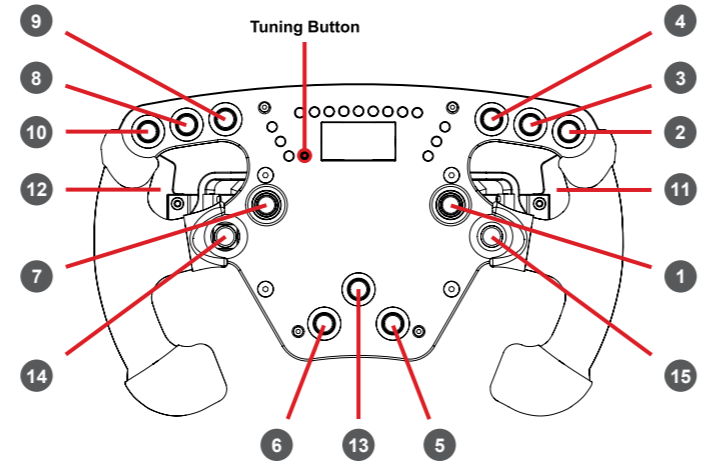
# F TUNING OPTIONS



# G BUTTON MAPPING

#	PC	PlayStation®
1	2	X
2	3	O
3	4	△
4	1	□
5	10	≡
6	9	↙↘
7	11	R3
8	12	L3
9	7	R2
10	8	L2
11	5	R1
12	6	L1
13	22	PS
14	26	X
15 FunkySwitch™	↑, ←, ↓, → ● → 25 ⊖ - 23 / ⊕ - 24	↑, ←, ↓, → ● → X ⊖ *GSB 1 / ⊕ *GSB 2

\* GSB = Game-Specific Button



# H SUPPORT



- A** DE Lieferumfang; FR Contenu de l'emballage; ES Contenidos del embalaje; IT Contenuto della confezione; PT Conteúdo da embalagem
- B** DE Montage; FR Montage; ES Montaje; IT Montaggio; PT Montagem
- C** DE Kalibrierung der mittelstellung; FR Calibrage du centre; ES Centrado del volante; IT Calibrazione del centro; PT Calibração do centro
- D** DE Kalibrierung des schalthebel; FR Étalonnage du levier de vitesses; ES Calibración del variador; IT Calibrazione del cambio; PT Calibragem de mudanças
- E** DE Modi; FR Modes; ES Modos; IT Modalità; PT Modos
- F** DE Einstellungsoptionen; FR Options de réglage; ES Opciones de ajuste; IT Opzioni di sintonizzazione; PT Opções de afinação
- G** DE Tastenbelegung; FR Mappage des boutons; ES Asignación de botones; IT Mappatura dei pulsanti; PT Mapeamento de botões
- H** DE Unterstützung; FR Support technique; ES Soporte técnico; IT Supporto tecnico; PT Suporte técnico

- EN** The product warranty is provided by Endor AG. Refer to the included warranty sheet as well as the terms & conditions of Endor AG on [fanatec.com](http://fanatec.com).
- DE** Dieses Produkt unterliegt der Garantie der Endor AG. Beachten Sie die beiliegenden Garantieblätter sowie die Allgemeinen Geschäftsbedingungen der Endor AG auf [fanatec.com](http://fanatec.com).
- FR** Ce produit est sous la garantie d'Endor AG. Reportez-vous aux fiches de garantie incluses ainsi qu'aux conditions générales d'Endor AG sur [fanatec.com](http://fanatec.com).
- ES** Este producto está bajo garantía de Endor AG. Consulte las hojas de garantía incluidas, así como los términos y condiciones de Endor AG en [fanatec.com](http://fanatec.com).
- IT** Questo prodotto è coperto dalla garanzia di Endor AG. Fare riferimento ai fogli di garanzia inclusi nonché ai termini e condizioni di Endor AG su [fanatec.com](http://fanatec.com).
- PT** Este produto está sob garantia da Endor AG. Consulte as folhas de garantia incluídas, bem como os termos e condições da Endor AG em [fanatec.com](http://fanatec.com).



**China RoHS 2**  
 China RoHS 2 refers to the Ministry of Industry and Information Technology Order No. 32, effective July 1, 2016, titled Management Methods for the Restriction of the Use of Hazardous Substances in Electrical and Electronic Products. To comply with China RoHS 2, we determined this product's Environmental Protection Use Period (EUP) to be 10 years in accordance with the Marking for the Restricted Use of Hazardous Substances in Electronic and Electrical Products, SJ/T 11364-2014.

中国 RoHS 2 是指 2016 年 7 月 1 日起施行的工业和信息化部令 32 号“电子电器产品限制使用有害物质管理办法”。为了符合中国 RoHS 2 的要求，我们根据“电子电器产品有害物质限制使用标识”(SJ/T 11364-2014) 确定本产品的环保使用期 (EUP) 为 10 年。

Part Name	Hazardous Substances					
	铅 (Pb)	汞 (Hg)	镉 (Cd)	六价铬 (Cr6+)	多溴联苯 (PBB)	多溴二苯醚 (PBDE)
连接铜针 (Connect copper needle)	X	o	o	o	o	o
螺母螺母 (Nutmutter)	X	o	o	o	o	o
编码器铜杆 (Encoder copper shaft)	X	o	o	o	o	o
其它所有组件 (Other enclosure components)	o	o	o	o	o	o
外壳 (Shell)	o	o	o	o	o	o
印刷电路板 (PCBA)	o	o	o	o	o	o

本表格依据 SJ/T 11364 的规定编制。  
 This table is prepared in accordance with the provisions of SJ/T 11364-2014.  
 O: 表示该有害物质在该部件所有均质材料中的含量均在 GB/T 26572 规定的限量要求以下。  
 o: Indicates that the hazardous substance contained in all of the homogeneous materials for this part is below the limit requirement of GB/T 26572.  
 X: 表示该有害物质至少在该部件的某一均质材料中的含量超出 GB/T 26572 规定的限量要求。  
 X: Indicates that the hazardous substance contained in at least one of the homogeneous materials used for this part is above the limit requirement of GB/T 26572.

Contact | 联系我们:  
 Endor AG  
 E.ON-Allee 3 - 84036 Landshut - Germany  
 Telephone | Телефон: +49 (871) 9221-122  
 Email | Электронная почта: [info.webshop@fanatec.com](mailto:info.webshop@fanatec.com)

This product meets the requirements of the Technical Regulations which limit the use of certain hazardous substances in electrical and electronic equipment.  
 Цей продукт відповідає вимогам RoHS (Директива ЄС 2011/65 / ЄС)

The F1 FORMULA 1 logo, F1 logo, F1 FIA FORMULA 1 WORLD CHAMPIONSHIP logo, FORMULA 1, FORMULA ONE, F1, FIA FORMULA ONE WORLD CHAMPIONSHIP, GRAND PRIX, F1 GRAND PRIX, FORMULA 1 GRAND PRIX and related marks are trademarks of Formula One Licensing BV, a Formula 1 Company. All rights reserved.

Manufactured and distributed by  
**ENDOR®**  
 Fanatec® is a registered trademark of Endor AG  
 Designed and developed by Endor AG in Germany  
 E.ON-Allee 3 - 84036 Landshut - Germany  
 Telephone: +49 (871) 9221-122 Fax: +49 (871) 9221-221  
 Email: [info.webshop@fanatec.com](mailto:info.webshop@fanatec.com)  
 Website: [www.fanatec.com](http://www.fanatec.com) - [www.endor.ag](http://www.endor.ag)  
 Made in China